



# 200W SMART SOLAR POWER MODULE

SKU: SM200-200AHL-V

- 200W Solar Module
- 200Ah LiFePo Battery
- Real-Time Power Notifications
- 4 Port – 30W per PoE Port
- 27" x 22" x 13" NEMA 3 Weatherproof Design
- Rust & Corrosion Resistant 5052 Aluminum
- Mount to Platform, Pole, or Wall
- Completely Equipment Agnostic

*\*Product pictured may have minor variations in versions*

-  200W Power
-  200Ah LifePO4
-  4 Port - 30W per PoE
-  Equipment Agnostic

## OVERVIEW

The SM200-200AHL-V is a flexible and modular solar-powered platform allowing you to easily install and have power where shore power is not readily available. With 200W of solar power, backed up by a 200Ah LiFePo battery, the SM200-200AHL-V is perfect for powering small electronic devices.

## THE ADVANTAGE

- Reduce Costs with Real-Time Notifications
- Ultimate Power Flexibility
- Enhanced Protection
- Rapid Deployment
- Versatile Installation
- Immediate Cost Savings
- Scalable & Adaptable
- Customize Your Way



PICTURED: SM200-200AHL-V

### CONSTRUCTION



### DOCKS & MARINAS



### PARKING LOTS



### PERIMETER



# PRODUCT SPEC SHEET: SM200-200AHL-V

## 200W SOLAR POWER MODULE



### REDUCE COSTS WITH REAL-TIME NOTIFICATIONS

Whether you have one platform or a numerous, being able to monitor each unit becomes critical. ArmorLogix helps save you operating costs by reducing the number of service visits checking up on your systems. Receive vital system alerts on all aspects of your solar platform ensuring that your solar panels are generating, batteries operational, and your equipment running at optimal capacity.

### ULTIMATE POWER FLEXIBILITY

No matter the location, ArmorLogix's solar power stations give you the flexibility to provide secure power to any site, no matter the location. You no longer need to worry about what infrastructure is currently in place. No power? No wiring? No problem. And with the included batteries, rest assured that your site has power for lighting, cellular, surveillance, and beyond.

### CUSTOMIZE YOUR WAY

One of the standout features of our enclosure is its ability to accommodate your unique needs. Not only have we designed it to be a robust switch housing, but we've also ensured there's ample space for your own sensors and equipment. This means you can integrate and customize the system to align with your specific requirements, without being restricted by space or design.

The inclusion of a spacious interior ensures that you're not just buying a static product; you're investing in a versatile solution that grows and adapts with your networking aspirations. Whether it's additional sensors, surveillance, cellular and wireless connectivity, monitoring devices, or other technical equipment, our enclosure is ready to house it all, ensuring you get the most out of your investment. Embrace flexibility and tailor your setup to perfection with our customizable enclosure.

### ENHANCED PROTECTION

The 5052 aluminum enclosure, rated NEMA 3, shields the switch from environmental challenges such as rain and snow. This robust protection ensures consistent performance and peace of mind, knowing that your investment is safeguarded against unpredictable elements. The use of durable aluminum material boosts the platform's longevity, especially in demanding outdoor settings. This durability translates to fewer replacements, reduced maintenance costs, and a trustworthy solution for critical networking needs. The combination of weatherproofing, surge immunity, and electrostatic protection ensures reliable performance. This comprehensive protection ensures uninterrupted operations, minimizing potential downtime and associated costs.

## SPECIFICATIONS

Solar Panels	1 x 200W Monocrystalline Solar Panel
Batteries	1 x 200AH LifePO4
Smart	Real-Time Power Notifications
Industrial PoE Port	12V 4 PoE (10/100Tx) Unmanaged Switch, 30W per port
Controller	30Amp Solar Charge Controller
Enclosure Size	27" x 22" x 13"
Enclosure Material	5052 Marine Grade Aluminum
Solar Panel Brackets	1 x Pole Mount Brackets with Hardware
PV Solar Wire Cabling	30ft PV Wire between Enclosure and Solar Panels
Working Temperatures	32° - 104° F
Battery Charge Temperatures	32° - 122° F
Battery Discharge Temperature	-4° - 140° F

\*For extreme temperatures please contact sales to upgrade your components to work for your specific environment

## RELATED PRODUCTS



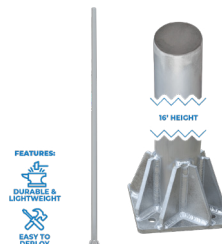
**200W SOLAR POWER MODULE**

SM200-200AHL



**400W SOLAR POWER MODULE**

SM400-200AHL-V



**16 FOOT ALUMINUM POLE FOR EQUIPMENT MOUNTING**

ALPOLE-16



**200W SOLAR POWERED MOBILE CART**

AL600