

Weatherproof 4 Port PoE w/ 4G, Strobes & 2 Cameras

SKU: WPNS-EDGE2-LED-4G-NCV

- 16" x 16" x 10" NEMA 3 Weatherproof Design
- Rust & Corrosion Resistant 5052 Aluminum
- 2x 4MP Armor Ball Cameras w/ 214° View
- Red / White / Blue Active Deterrence LED Strobes
- 4G Cellular Modem w/ GPS and Wireless Connectivity
- PoE 4+1 Port Switch With 30W Per PoE Port
- 1 x Gigabit RJ45 + 1 x 1.25Gbps SFP Port - (Easily Add Fiber)



*Product pictured may have minor variations in versions



5052 Aluminum



NEMA 3 Weatherproof



4 Port PoE



10/100/1000Mbps

Overview

Introducing the WPNS-EDGE2-LED-4G-NCV, Optiview's innovative weatherproof networking solution. Encased in a NEMA 3 rated, rust-resistant 5052 aluminum enclosure, offering 4 PoE ports, 4G connectivity, and wireless capabilities. Designed to thrive in even the most demanding environments, the WPNS-EDGE2-LED-4G-NCV delivers lightning-fast connectivity and industrial-grade PoE performance.

Optional Upgrades

Boost connectivity with 5G cellular upgrades with the WPNS-4-5G or enhance security through surveillance options. Need more ports? Upgrade to an 8 port network switch for double the PoE ports.



PICTURED: WPNS-4 with 2 LPR cameras

CAMPUSES

GATES & ENTRIES

DOCKS & MARINAS

PARKING LOTS

Spec Sheet: WPNS-EDGE2-LED-4G-NCV

Weatherproof 4 Port PoE W/ 4G, Strobes & 2 Cameras Network Solution



Enhanced Protection

The 5052 aluminum enclosure, rated NEMA 3, shields the switch from environmental challenges such as rain and snow. This robust protection ensures consistent performance and peace of mind, knowing that your investment is safeguarded against unpredictable elements.

The use of durable aluminum material boosts the switch's longevity, especially in demanding outdoor settings. This durability translates to fewer replacements, reduced maintenance costs, and a trustworthy solution for critical networking needs.

The combination of weatherproofing, surge immunity, and electrostatic protection ensures the switch's reliable performance. This comprehensive protection ensures uninterrupted operations, minimizing potential downtime and associated costs.

Active Deterrence

Optiview's WPNS-EDGE2-LED-4G-NCV is equipped with active deterrence red and blue LED strobes providing on site visual warnings.

Efficient Cooling

The aluminum's superior thermal conductivity, combined with the thermostatically controlled fan, ensures effective heat dissipation. This ensures that the switch operates at optimal temperatures, prolonging its lifespan and ensuring consistent, high-speed performance.

Rapid Deployment

The PoE capability ensures both data and power transmission over a single Ethernet cable, streamlining installations and reducing the need for separate power sources. This means fewer cables, a cleaner setup, and a more efficient use of resources, enhancing the overall user experience.

Scalable & Adaptable

The inclusion of both RJ45 and SFP ports, along with the switch's expandable and stackable capabilities, ensures adaptability to changing network requirements. This forward-thinking design means that as your business grows, your network infrastructure is ready to scale with you, ensuring a seamless transition. This flexibility ensures that businesses can expand their network reach without being constrained by infrastructure limitations, easing deployment burdens.

Versatile Installation

The universal wall/pole mounting brackets and the compact design of the enclosure facilitate easy and flexible installation. This simplicity reduces setup complexities, trims down install time, and eradicates the need for separate power sources.

Immediate Cost Savings

Say goodbye to lengthy, costly installations that involve digging up trenches over poured concrete. Our weatherproof switch's design simplifies setup, reducing both time and infrastructure expenses. Plus, its durable build means less maintenance, lowering total ownership costs.

The integrated PoE capability and included power outlets eliminate the need for additional power infrastructure. This leads to direct cost savings, allowing businesses to allocate resources more efficiently and achieve a quicker return on investment. In addition, the PoE switch's high efficiency and adaptive power features ensure minimal energy wastage.

Customize Your Way

One of the standout features of our enclosure is its ability to accommodate your unique needs. Not only have we designed it to be a robust switch housing, but we've also ensured there's ample space for your own sensors and equipment. This means you can integrate and customize the system to align with your specific requirements, without being restricted by space or design.

The inclusion of a spacious interior ensures that you're not just buying a static product; you're investing in a versatile solution that grows and adapts with your networking aspirations. Whether it's additional sensors, monitoring devices, or other technical equipment, our enclosure is ready to house it all, ensuring you get the most out of your investment. Embrace flexibility and tailor your setup to perfection with our customizable enclosure.

Product Specifications

NETWORK	
Network Ports	PoE Ports: 4 10/100/1000Mbps RJ45 Uplink: 1 Gigabit RJ45 + 1SFP(1.25Gbps)
Ethernet Standard	IEEE 802.3/u/z/ab, 10Base-T, 100Base-TX, 1000Base-T and 1000Base-X
Transmission Distance	1~5 Ethernet Port 0~100m 1 SFP: According to different SFP
Transmission Media	5 RJ45 Port Cat5e/6 UTP cable 1 SFP: LC interface optical fiber
PoE Wattage	Maximum 30W per Port

Spec Sheet: WPNS-EDGE2-LED-4G-NCV

Weatherproof 4 Port PoE W/ 4G, Strobes & 2 Cameras Network Solution



Product Specifications Cont.

NETWORK	
MAC Address List	8K
Switch Capacity	12G
Surge Immunity	Level 3, executive standard IEC61000-4-5
Electrostatic Protection	1a touch electric discharge: level 3, 1a Air discharge: level 3, Executive standard IEC61000-4-2

HOUSING	
Material	1/8" 5052 Aluminum
Door Seals	1/4" Weather Tight Neoprene
Available Equipment Mounting Space	(5.25" x 5") + (5.75" x 6.5") See diagram below
Security Lock	Yes (2x keys included)
Mounting Brackets	Universal Wall / Pole Brackets – Bands not included (x2)
Fan / Thermostat	1x Thermostatically Controlled Fan

BREAKER	
Breaker Type	Ground Fault
Current Rating (Amps)	16A
Voltage Rating - AC	240 V
Actuator Type	Lever
Number of Poles	9

MODEM	
WAN Interface	1x 10/100/1000M Ethernet 1x Embedded Cellular Modem with Redundant SIM Slots
LAN Interface	2x a/100/1000M Ethernet
Wi-Fi Interface	Simultaneous Dual-Band (2.4GHz / 5GHz) Wi-Fi 5, 2X2 MIMO Wi-Fi WAN1 and/or AP
SpeedFusion Features	Hot Failover / WAN Smoothing
Number of PepVPN / SpeedFusion Peers	2 / 5
Feature	GPIO, Ignition Sensing
Router Throughput	300Mbps
PepVPN Throughput (no encryption)	80Mbps

MODEM CONT.	
PepVPN Throughput (256-bit AES)	20Mbps / 60Mbps
Recommended Users	1 – 60
Cellular Data Rate (Downlink/Uplink)	CAT-7: 300 Mbps/150 Mbps CAT-6: 300 Mbps/50 Mbps CAT-4: 150 Mbps/50 Mbps
Antenna Connectors	2x SMA Cellular Antenna Connectors 2x RP-SMA Wi-Fi Antenna Connectors 1x SMA GPS Antenna Connector
Power Input	Power Port: 10V – 30V DC AC Adapter: AC Input 100V–240V / DC Output 12V Power over Ethernet 802.3at
Power Consumption	13W (nominal), 18W (max.)
SIM Card Size	Nano-SIM
Compatible Networks (US)	AT&T, Verizon, T-Mobile

CAMERA	
Resolution	4MP - 2688 x 1520
IR Range	Up to 98ft IR range
Field of View (H)	101°
Ultra Motion Detection	Yes
Audio	Built-in Mic
Edge Storage	Yes, with optional 256GB Memory Card (not Included)
WDR	120dB
Power Consumption	Max 6.0w

LED STROBE	
Color	Red / White / Blue
Color Type	Single / Split
Patterns	29+ select-able flash combinations
Pattern Memory Recall	Yes
Synchronization	Yes
Voltage	10-30 VDC
Power Consumption	Max. 18.0w
Amps	2A

Spec Sheet: WPNS-EDGE2-LED-4G-NCV

Weatherproof 4 Port PoE W/ 4G, Strobes & 2 Cameras Network Solution



Product Specifications Cont.

GENERAL	
Over Temperature	Shut down o/p voltage, recovers automatically after temperature goes down
Working Temperatures, Humidity	-4 ~ +158°F, 20 ~ 95% RH non-condensing
Storage Temperatures, Humidity	-40 ~ +185°F, 10 ~ 95% RH
NEMA Rating	3
Dimensions: External	16" W x 16.875" H x 11.375" D

GENERAL CONT.	
Weight	31 lbs.
DIN Rail Length	13"
Cable Management Length	13"

Additional Products



WPNS-4-5G
Weatherproof 4 Port PoE w/ 5G Solution



WPNS-8-4G
Weatherproof 8 Port PoE w/ 4G Solution



WPNS-4-EDGE2
Weatherproof 4 Port PoE Solution w/ 2 Cameras



WEATHERPROOF CONSTRUCTION BOX
w/ 5G, LED, 2 Cameras



SM200-200AHL
200AH Solar Power Module

Additional Accessories



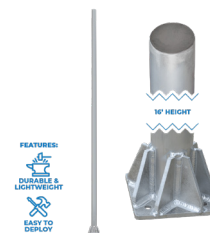
ALHANDLE-P
Padlockable Handle



ALHTR150-PI
Thermostatic Heater



AP5G4-INJ
5GHZ Long Range PTP Wireless Bridge w/ Injector



ALPOLE-16
16ft Aluminum Pole For Equipment Mounting



IP4MIAB-28-SDAM-NCV
4MP Armor Ball IP Camera w/ Built-in Mic

Spec Sheet: WPNS-EDGE2-LED-4G-NCV

Weatherproof 4 Port PoE W/ 4G, Strobes & 2 Cameras Network Solution



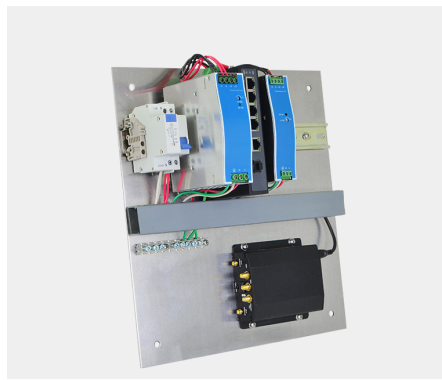
*Product pictured may have minor variations in versions

LEFT: WPNS-EDGE2-LED-4G-NCV

RIGHT: WPNS-EDGE2-LED-4G-NCV



INCLUDES: 2x universal mounting brackets for rapid deployment to wall, pole, and more.



EXAMPLE: Installation with ample room to add third party equipment.



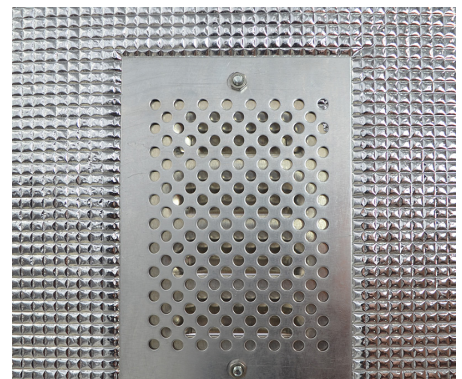
INCLUDES: Thermostatically controlled fan kicks on only when it's needed.



INCLUDES: Sunshield keeps your internal components cool by dispersing direct sunlight.



INCLUDES: Lockable enclosure with camlock and set of 2x camlock keys



INCLUDES: Screened airflow vents on the sides and door allows hot air to expel more efficiently

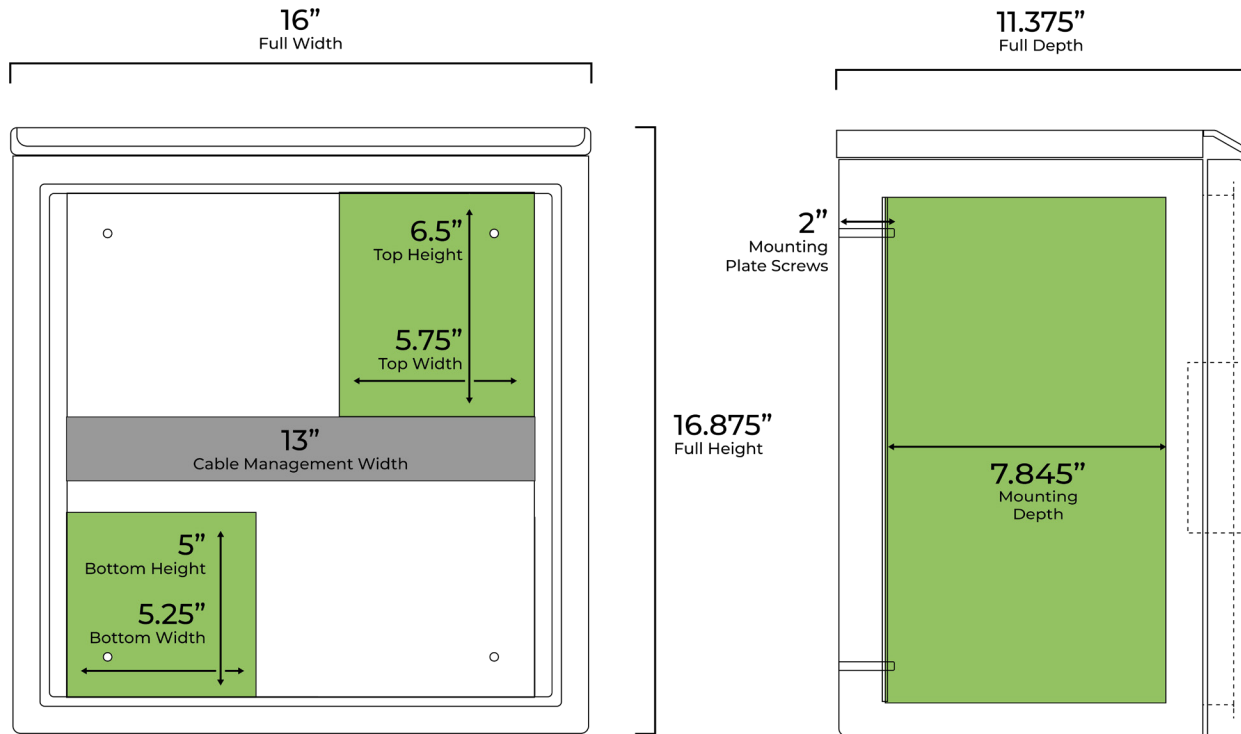
*Product pictured may have minor variations in versions


Spec Sheet: WPNS-EDGE2-LED-4G-NCV

Weatherproof 4 Port PoE W/ 4G, Strobes & 2 Cameras Network Solution



Dimensions



 Workable Space For Your Equipment