



OPTIVIEW

NVR8P8-2E-AI

16MP 8 Channel 8 PoE 1U NVR with Analytics



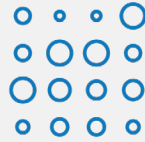
16MP 4K IP

Up to 16MP resolution for preview and playback and a maximum bandwidth of 256 Mbps.



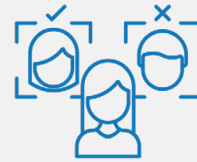
Perimeter Protection

Combine Tripwire & Intrusion with object detection (people or vehicles) for advanced motion detection.



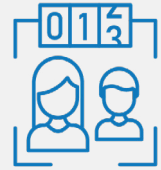
Heat Map

This camera using deep learning algorithms, reports number of people and average stand time.



Face Recognition

Detect & Recognize faces that are and are not (stranger mode) in a database. Pair with Access Control.



People Counting

Detect and track targets using Optiview's advanced image technology by with up to 4 customizable areas.

PERIMETER PROTECTION

Combine multiple tripwire and intrusion IVS rules with object (people or vehicle) detection to enable advanced motion detection alarms and alerts. Ideal for crosswalks, parking lots, communities, lawns, schools, and more.

REAL TIME FACE RECOGNITION

The NVR8P8-2E-AI comes fully equipped with advanced facial attributes analysis. Identify, capture and record people based on gender, age, expression, glasses, mustache, face mask. With real time facial feature filtering, you can display faces with targeted features.

HEAT MAP

The NVR8P8-2E-AI supports heat map reporting for number of people and average strand time. You can observe customer's regions of interest from two aspects: number of people and time.

PEOPLE COUNTING

The NVR8P8-2E-AI detects and tracks target by using advanced image processing technology and deep learning algorithm. You can draw 4 polygon areas, and count people in each area; When the number of the people in the area is greater than or equal to/ lower than or equal to the defined threshold, the alarm will be triggered.

AI SMART SEARCH

Advanced AI Smart Search allows the user to perform searches by either people or vehicle (or both), and to add additional filters such as vehicle type or color, shirt color, gender, and more.

NVR8P8-2E-AI

16MP 8 Channel 8 PoE 1U NVR with Analytics



AUTOMATIC NUMBER PLATE RECOGNITION (ANPR)

Automatic Number Plate Recognition available for convenient entrance/exit management. Support license plate recognition, black/white list import/export, add/delete B/W list number, search result from recorded video. This feature requires a supported license plate recognition camera and may require a license fee.

ID+

Intelligent Motion Detection Plus, or ID+, is an upgraded version of ID that greatly improves the alarm accuracy only triggering motion detect when people or vehicles are detected, filtering out tree movement, lighting changing, and more.

AUTOMATIC NETWORK REPLENISHMENT (ANR) TECHNOLOGY

Network Video Recorders with the ANR function automatically store video data on an IP camera SD card when the network is disconnected. After recovery of the network, the NVR automatically retrieves the video data stored on the camera.

PRODUCT SPECIFICATIONS

SYSTEM	
Main Processor	Industrial-grade Processor
Operating System	Embedded Linux
Operating Interface	Web; Local GUI

AI	
AI by Recorder	Face Detection; Face Recognition; Perimeter Protection; ID+
AI by Camera	Face Detection; Face Recognition; Perimeter Protection; ID+; ANPR (4 channels); People Counting; Stereo Analysis; Heat Map

PERIMETER PROTECTION	
Perimeter Performance AI by Recorder	2 channels, 10 IVS rules for each channel
Perimeter Performance of AI by Camera	8 channels

FACE RECOGNITION	
Face Database Capacity	Up to 10 face databases with 200,00 images, with a total capacity of 2.5 G. Name, gender, birthday, address, credential type, credential No., countries & regions and state can be added to each face image.
Face Recognition Performance of AI by Recorder	8-channel FD (by camera) + FR (by recorder), image stream: 12 face images/s 1-channel FD (by recorder) + FR (by recorder), video stream: 12 face images/s
Face Recognition Performance of AI by Camera	8 channels

FACE DETECTION	
Face Attributes	Gender; Age Group; Glasses; Expressions; Face Mask; Beard
Face Detection Performance of AI by Recorder	1 channel (up to 12 face images/s each channel)
Face Detection Performance of AI by Camera	8 channels

ID+	
ID+ by Recorder	4 channels: Secondary filtering for human and motor vehicle, reducing false alarms caused by leaves, rain and lighting condition change
ID+ by Camera	8 channels

AUDIO AND VIDEO	
Access Channel	8 channels
Network Bandwidth	AI disabled: 256 Mbps incoming, 256 Mbps recording and 256 Mbps outgoing AI enabled: 180 Mbps incoming, 180 Mbps recording and 180 Mbps outgoing
Resolution	16MP; 12MP; 8MP; 6MP; 5MP; 4MP; 3MP; 1080p; 960p; 720p; D1; CIF
Decoding Capability	AI disabled: 2-channel 16MP @ 30 fps; 2-channel 12MP @ 30 fps; 4-channel 8MP @ 30 fps; 6-channel 5MP @ 30 fps; 8-channel 4MP @ 30 fps; 16-channel 1080p @ 30 fps AI enabled: 1-channel 16MP @ 30 fps; 2-channel 12MP @ 30 fps; 3-channel 8MP @ 30 fps; 4-channel 5MP @ 30 fps; 6-channel 4MP @ 30 fps; 12-channel 1080p @ 30 fps

NVR8P8-2E-AI

16MP 8 Channel 8 PoE 1U NVR with Analytics



PRODUCT SPECIFICATIONS

AUDIO AND VIDEO CONT.	
Video Output	1 HDMI, 1 VGA HDMI: 3840 × 2160, 1920 × 1080, 1280 × 1024, 1280 × 720 VGA: 1920 × 1080, 1280 × 1024, 1280 × 720 *Simultaneous/heterogeneous video sources output for VGA and HDMI is configurable.
Multi-Screen Display	1st Screen: 1 / 4 / 8 / 9 2nd Screen: 1 / 4 / 8 / 9
Third-party Camera Access	Panasonic, Sony, Samsung, Axis, Pelco, Arecont, ONVIF, Canon

COMPRESSION STANDARD	
Video Compression	Smart H.265+; H.265; Smart H.264+; H.264; MJPEG
Audio Compression	G.711a; G.711u; PCM; G726

NETWORK	
Network Protocol	HTTP; HTTPS; TCP/IP; IPv4/IPv6; UPnP; SNMP; UDP; SMTP; NTP; DHCP; DNS; IP Filter; PPPoE; DDNS; FTP; Alarm Server; IP Search; P2P; Auto Register
Mobile Phone Access	iOS; Android
Interoperability	ONVIF 22.06(Profile T; Profile S; Profile G); CGI; SDK
Browser	Chrome; IE9 and later; Firefox

RECORDING PLAYBACK	
Multi-Channel Playback	Up to 8 channels
Record Mode	General, Motion Detection; Intelligent; Alarm
Backup Method	USB Device and Network
Playback Mode	Instant Playback, General Playback, Event Playback, Tag Playback, Smart Playback

STORAGE	
Disk Group	Yes

ALARM	
General Alarm	Motion Detection; Privacy Masking; Video Loss; Scene Changing; PIR Alarm; IPC External Alarm

ALARM CONT.	
Anomaly Alarm	Camera Disconnection; Storage Error; Disk Full; IP Conflict; MAC Conflict; Login Locked; and Cybersecurity Exception
Intelligent Alarm	Face Detection; Face Recognition; Perimeter Protection; ID+; People Counting; Stereo Analysis; Heat Map
Alarm Linkage	Record; Snapshot; IPC External Alarm Output; Audio; Buzzer; Log; Preset; Email

PORT	
Audio Input	1-channel RCA
Audio Output	1-channel RCA
Alarm Input	4 channels
Alarm Output	2 channels
HDD Interface	2 SATA ports, up to 10TB. The maximum HDD capacity varies with environment temperature.
RS-232	1
RS-485	1
USB	2 (1 front USB 2.0 port, 1 rear USB 2.0 port)
HDMI	1
VGA	1
Network Port	1 (10/100/1000 Mbps Ethernet port, RJ-45)
PoE Port	8 ports, 10/100 Mbps, IEEE 802.3 af/at

GENERAL	
Power Supply	100–240 VAC, 47-63 Hz
Power Consumption	Total output of NVR is <10 W (without HDD) Total output power of PoE is 130W, the maximum output power of a single port is 25.5W
Net Weight	5.53 lb
Gross Weight	4.52 lb
Product Dimensions	14.76" × 12.96" × 2.09"
Packaging Dimensions	17.76" × 5.79" × 16.73"
Operating Temperature	14 °F to +131 °F
Storage Temperature	-4 °F to +140 °F
Operating Humidity	10%–93% (RH)
Installation	Rack or desktop

NVR8P8-2E-AI

16MP 8 Channel 8 PoE 1U NVR with Analytics



PRODUCT SPECIFICATIONS CONT.

GENERAL CONT.	
Certifications	FCC: 47 CFR FCC Part15, SubpartB, Class A CE-EMC: EN 55032:2015+A1:2020; EN IEC 61000-3-2:2019+A1:2021; EN 61000-3-3:2013+A1:2019+A2:2021; EN 55035:2017+A11:2020; EN 50130- 4:2011+A1:2014 CE-LVD: EN 62368-1:2014

ADDITIONAL PRODUCTS



OPTIVIEW'S VIDEO MONITORING SOFTWARE
Remote Monitoring



SURVEILLANCE DRIVES
4TB / 8TB / 10TB



IP8MIAB-28A
8MP 4K Fixed Armor Ball IP Camera

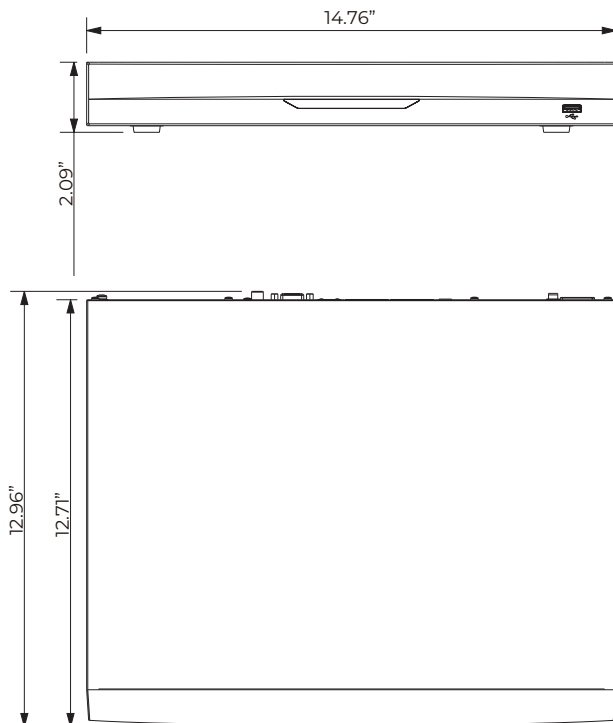


IP8MIBC-28-AI
8MP 4K Night Color Fixed IP Bullet Camera

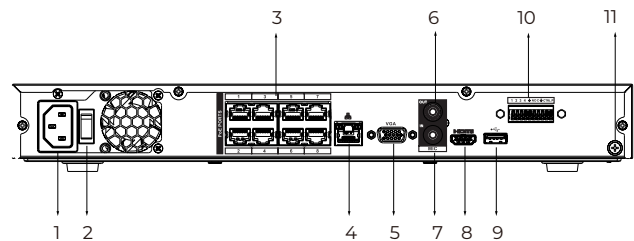


IP4MIAB-28-AD
4MP Active Deterrence IP Camera w/ Analytics

DIMENSIONS



BACK PLATE



- | | |
|---------------------------|----------------------------|
| 1 Power Input | 2 Power Switch |
| 3 PoE Ports | 4 Network Port |
| 5 VGA Port | 6 AUDIO OUT, RCA Connector |
| 7 AUDIO IN, RCA Connector | 8 HDMI Port |
| 9 USB Port | 10 Alarm Input/Output |
| 11 Ground | |