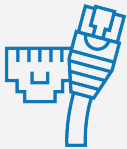


Optiview



IP4MIBC-28-AI

4MP Network Bullet Camera with Mic & Analytics



4MP IP

Capture HD video footage with 4MP IP 2.8 fixed lens with a maximum aperture of F1.6



Perimeter Protection

Combine Tripwire & Intrusion with object detection (people or vehicles) for advanced motion detection.



95° View

Capture even more with an ultra-wide fixed 95° view with no distortion.



IP67

All metal aluminum housing for indoor and outdoor installations.



Built-In Mic

This camera comes with a Built-In Mic getting you even more data and protection from your device.

PERIMETER PROTECTION

Combine multiple tripwire and intrusion IVS rules with object (people or vehicle) detection to enable advanced motion detection alarms and alerts. Ideal for crosswalks, parking lots, communities, lawns, schools, and more.

WIDE DYNAMIC RANGE

The camera achieves vivid images, even in the most intense contrast lighting conditions, using industry-leading wide dynamic range (WDR) technology. For applications with both bright and low lighting conditions that change quickly, True WDR (120 dB) optimizes both the bright and dark areas of a scene at the same time to provide usable video.

AUTOMATIC NETWORK REPLENISHMENT (ANR) TECHNOLOGY

The IP4MIBC-28-AI when connected to an ANR compatible Network Video Recorder will automatically store video data on the internal memory card when the network is disconnected. After recovery to the network, the NVR automatically retrieves the video data stored on the camera.

UP TO 98FT IR DISTANCE

The IP4MIBC-28-AI is capable of producing a stunningly clear, colorful video with low illuminance enhancement for darker environments. In the darkest environments, on board IR illumination kicks in. The IP4MIBC-28-AI provides clear video capture in both day and night with high definition video output.

BUILT-IN MICROPHONE

The IP4MIBC-28-AI comes with a built-in mic to help give you even more protection than a traditional still video.

IP4MIBC-28-AI

4MP Network Bullet Camera with Mic & Analytics



ID+

Intelligent Motion Detection Plus, or ID+, is an upgraded version of ID that greatly improves the alarm accuracy of 98% only triggering motion detect when people or vehicles are detected, filtering out tree movement, lighting changing, small animals (<2% false alarm rate), large animals (<10% false alarm rate) and more.

EDGE RECORDING

Optional edge recording with an optional memory slot expandable up to 256GB.

SMART H.265+

Reduce bit rate and storage requirements by up to 80% when compared to standard H.265 (up to 90% vs H.264), allowing video to be stored for longer periods of time.

COMMERCIAL GRADE EQUIPMENT

Built for endurance, this all metal housing is rated IP67, which means it is protected from water and dust. Mount this camera anywhere with it's 3-axis cable management bracket. Additional junction boxes and brackets are available for additional installation options, and help further protect your cables and connections.

PRODUCT SPECIFICATIONS

CAMERA	
Image Sensor	1/2.9" CMOS
Max. Resolution	2688 (H) × 1520 (V)
ROM	128 MB
RAM	128 MB
Scanning System	Progressive
Electronic Shutter Speed	Auto/Manual 1/3 s–1/100,000 s
Min. Illumination	0.006 Lux@F1.6(Color,30IRE)
	0.0006 Lux@F1.6(B/W,30IRE)
	0 lux (Illuminator on)
S/N Ratio	>56 dB
Illumination Distance	30 m (98.43 ft) (IR LED)
Illuminator On/Off Control	Auto; manual
Illuminator Number	1 (IR LED)
Pan/Tilt/Rotation Range	Pan: 0°–360°
	Tilt: 0°–90°
	Rotation: 0°–360°

INTELLIGENCE	
Perimeter Protection	Intrusion, tripwire (the two functions support the classification and accurate detection of vehicle and human)
Smart Search	Work together with Smart NVR to perform refine intelligent search, event extraction and merging to event videos

LENS	
Lens Type	Fixed-focal
Lens Mount	M12
Focal Length	2.8 mm
Max. Aperture	F1.6
Field of View	H: 95°; V: 52°; D: 114°
Iris Control	Fixed
Close Focus Distance	2.95 ft
DORI Distance	Detect: 208.66 ft, Observe: 83.33 ft, Recognize: 41.67 ft, Identify: 20.99 ft

VIDEO	
Video Compression	H.264H; H.265; H.264; H.264B; MJPEG (Only supported by the sub stream)
Smart Codec	Smart H.265+; Smart H.264+
Video Frame Rate	Main stream: 2688 × 1520@ (1–20 fps)/2560 × 1440@ (1–25/30 fps)
	Sub stream: 704 × 576@ (1–25 fps)/704 × 480@ (1–30 fps)
	*The values above are the max. frame rates of each stream; for multiple streams, the values will be subjected to the total encoding capacity.
Stream Capability	2 streams
Resolution	4M (2688 × 1520); 4M (2560 × 1440); 3M (2304 × 1296); 1080p (1920 × 1080); 1.3M (1280 × 960); 720p (1280 × 720); D1 (704 × 576/704 × 480); VGA (640 × 480); CIF (352 × 288/352 × 240)
Bit Rate Control	CBR / VBR

IP4MIBC-28-AI

4MP Network Bullet Camera with Mic & Analytics



PRODUCT SPECIFICATIONS CONT.

VIDEO CONT.	
Video Bit Rate	H.264: 32 kbps–6144 kbps H.265: 12 kbps–6144 kbps
Day/Night	Auto (ICR) / Color / B/W
BLC	Yes
HLC	Yes
WDR	120 dB
White Balance	Auto; Natural; Street Lamp; Outdoor; Manual; Regional Custom
Gain Control	Auto; Manual
Noise Reduction	3D NR
Motion Detection	OFF / ON (4 areas, rectangular)
Region of Interest (RoI)	Yes (4 areas)
Image Rotation	0° / 90° / 180° / 270° (Support 90° / 270° with 2688 × 1520 resolution and lower)
Mirror	Yes
Privacy Masking	4 areas

AUDIO	
Built-in MIC	Yes
Audio Compression	G.711a; G.711Mu; PCM; G.726

ALARM	
Alarm Event	No SD card; SD card full; SD card error; network disconnect; IP conflict; illegal access; motion detect; video tampering; tripwire; intrusion; ID+; voltage detect; security exception

NETWORK	
Network Port	RJ-45 (10/100 Base-T)
SDK and API	Yes
Network Protocol	IPv4; IPv6; HTTP; TCP; UDP; ARP; RTP; RTSP; RTCP; RTMP; SMTP; FTP; SFTP; DHCP; DNS; DDNS; NTP; Multicast; ICMP; IGMP
Interoperability	ONVIF (Profile S/Profile T); CGI; P2P; Milestone
User/Host	6 (Total bandwidth: 36 M)
Storage	FTP; SFTP; Memory Card Slot (support max. 256 GB)
Browser	IE, Chrome, Firefox
Management Software	Optiview VMX, Optiview VMX Mobile

NETWORK CONT.	
Mobile Client	iOS; Android
Cyber Security	Configuration Encryption; Trusted Execution; Digest; Security Logs; WSSE; Account Lockout; Syslog; Video Encryption; 802.1x; IP/MAC Filtering; HTTPS; Trusted Upgrade; Trusted Boot; Generation and Importing of X.509 Certification

CERTIFICATION	
Certifications	CE-LVD: EN62368-1; CE-EMC: Electromagnetic Compatibility Directive 2014/30/EU; FCC: 47 CFR FCC Part 15, Subpart B; UL/CUL: UL62368-1 & CAN/CSA C22.2 No. 62368-1-14

POWER	
Power Supply	12 VDC/PoE (802.3af)
Power Consumption	Basic: 2.5 W (12 VDC); 3.3 W (PoE); Max. (ICR + H.265 + max. resolution + main stream + IR intensity + WDR + IVS): 4.2 W (12 VDC); 5.1 W (PoE)

ENVIRONMENT	
Operating Temperature	-40 °F to +140 °F
Operating Humidity	≤95%
Storage Temperature	-40 °F to +140 °F
Protection	IP67

STRUCTURE	
Casing Material	Metal
Product Dimensions	6.54" × 2.76" × 2.76" (L × W × H)
Net Weight	1.06 lb
Gross Weight	1.30 lb

IP4MIBC-28-AI

4MP Network Bullet Camera with Mic & Analytics



ADDITIONAL PRODUCTS



OPTIVIEW's VIDEO MONITORING SOFTWARE
Remote Monitoring



NVR16P16-4E-AI
16 Channel, 5 Way Ultra
16 MP NVR w/ Analytics



IP4MIAB-28-AI
4MP Fixed Armor Ball
Camera w/ Analytics



IP4MIAD-212-ZSM
4MP Varifocal Armor
Dome Camera



IP5F
5MP 360° Fisheye
Camera with Analytics

COMPATIBLE BRACKETS

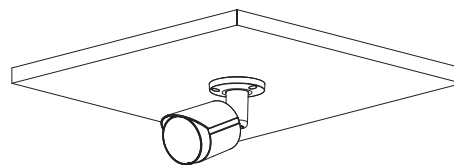


JB134
Junction Box for
HD & IP Camera

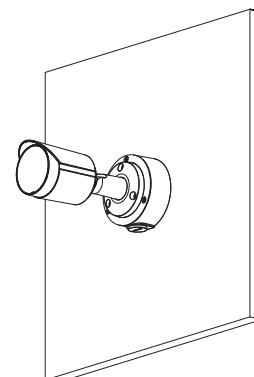


JB130
Armor Dome Camera
Wall Mount Bracket

MOUNTING OPTIONS



Ceiling Mount



Wall Mount

DIMENSIONS

