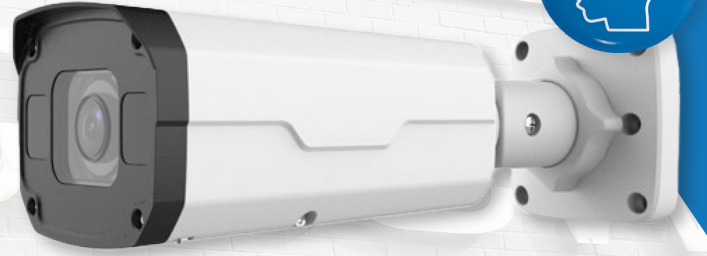


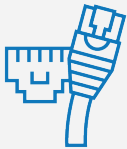


Optiview



IP8MIBC-212-NCV

8MP 4K Varifocal IP Bullet Camera with Analytics



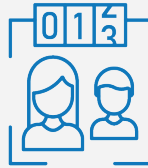
8MP 4K IP

Capture HD video footage with 8MP IP 2.8 ~ 12MM variable focus lens with a maximum aperture of F1.6



Smart Intrusion Prevention

Accurately reduce false alarms with custom zones with human and vehicle detection.



People Counting

Detect and track targets using Optiview's advanced image technology by with up to 4 customizable areas.



IP67 & IK10

All metal aluminum housing for indoor and outdoor installations with IK10 vandal rating.



Built-In Audio

With two-way audio support, communicate with anyone in the camera's proximity.

4K RESOLUTION

4K resolution captures images four times the pixel density of 1080P which means that the finer details, such as faces or smaller items can be viewed with more detail than traditional 1080P surveillance.

PEOPLE COUNTING

The IP8MIBC-212-NCV detects and tracks target by using advanced image processing technology and deep learning algorithm. You can draw 4 polygon areas, and count people in each area; When the number of the people in the area is greater than or equal to/lower than or equal to the defined threshold, the alarm will be triggered.

SMART INTRUSION PREVENTION

Utilizing machine learning and data intelligence, Smart Intrusion Prevention or SIP helps reduce false-alarm rates by allowing you to set up Cross Line Detection, Intrusion Detection, as well as Enter / Leave Area, all which can do any combination of human/vehicle/non-motor vehicle recognition. Smart Intrusion Prevention's detection rate of >95% helps you improve your perimeter protection, reduce false alarms while keeping you informed about the events that matter the most to you.

AUTOMATIC NETWORK REPLENISHMENT (ANR) TECHNOLOGY

The IP8MIBC-212-NCV when connected to an ANR compatible Network Video Recorder will automatically store video data on the internal memory card when the network is disconnected. After recovery to the network, the NVR automatically retrieves the video data stored on the camera.

IP8MIBC-212-NCV

8MP 4K Varifocal IP Bullet Camera with Analytics



ULTRA MOTION DETECTION

Utilizing machine learning and data intelligence, Ultra Motion Detection or UMD helps you filter out object based on motion detection, detecting motion of specified object types in the image, and trigger an alarm when such motion is detected. UMD supports two different object types: Person and Vehicle. UMD provides a detection rate of >90% up to 49ft and is more efficient than traditional motion detection, further reducing false-alarms. Ultra Motion Detection can be configured to your full screen or area detection.

WIDE DYNAMIC RANGE

The camera achieves vivid images, even in the most intense contrast lighting conditions, using industry-leading wide dynamic range (WDR) technology. For applications with both bright and low lighting conditions that change quickly, True WDR (120 dB) optimizes both the bright and dark areas of a scene at the same time to provide usable video.

EDGE RECORDING

Optional edge recording with an optional memory slot expandable up to 256GB.

PRODUCT SPECIFICATIONS

CAMERA	
Sensor	1/2.8", 8.0 Megapixel, Progressive Scan, CMOS
Min. Illumination	Colour: 0.005 Lux (F1.6, AGC On) 0 Lux with IR On
Day / Night	IR - Cut Filter with Auto Switch (ICR)
Shutter	Auto / Manual, 1 - 1/100,000s
Pan / Tilt / Rotation Range	Pan: 0° - 360°; Tilt: 0° - 90°; Rotation: 0° - 360°
WDR	120 dB
S / N	> 56 dB

CROWD DENSITY

With deep learning algorithm, the IP8MIBC-212-NCV can detect the crowd density on the image, and display it on heat map; it can detect people quantity and density in selected area and set threshold. When the number or density is larger or smaller than the threshold, it triggers linkage.

ULTRA 265 COMPRESSION

Utilizing H.265 advanced video encoding, provides high-quality video while reducing the storage space needed to retain your video events. Users can add their own memory card to take advantage of its edge recording capabilities.

COMMERCIAL GRADE EQUIPMENT

Built for endurance, this all metal housing is rated IP67, which means it is protected from water and dust but is also vandal proof resistant rating of IK10. Mount this camera anywhere with it's 3-axis cable management bracket. Additional junction boxes and brackets are available for additional installation options, and help further protect your cables and connections.

NDAA COMPLIANCE

The John S. McCain National Defense Authorization Act (NDAA) is a United States federal law which specifies the budget, expenditures and policies of the U.S. Department of Defense. For Fiscal Year 2019, the NDAA Section 889, prohibits the U.S. government from procuring video and telecommunication equipment from certain Chinese companies and their subsidiaries. Some non government projects may require NDAA compliance if federal funding is being used.

LENS	
Lens	2.8mm - 12mm, AF Automatic Focus and Motorized Zoom Lens
Iris	Fixed
Field of View	107.4° - 29° (H); 54.2° - 16.3° (V); 111.0° - 33.1° (D)
DORI Distance	Detect: 285.1 ft; Observe: 114.2 ft; Recognize: 57.1 ft; Identify: 28.5 ft

ILLUMINATOR	
IR Range	Up to 164ft
Wavelength	850nm
IR On / Off Control	Auto / Manual

IP8MIBC-212-NCV

8MP 4K Varifocal IP Bullet Camera with Analytics



PRODUCT SPECIFICATIONS CONT.

VIDEO	
Video Compression	Ultra 265, H.265, H.264, MJPEG
H.264 Code Profile	Baseline Profile, Main Profile, High Profile
Frame Rate	Main Stream: 8MP (3840 x 2160), Max 20fps; 5MP (3072 x 1728), Max 30fps; 4MP (2560 x 1440), Max 30fps; 1080P (1920 x 1080), Max 30fps; Sub Stream: 1080P (1920 x 1080), Max 30fps; 720P (1280 x 720), Max 30fps; D1 (720 x 576), Max 30fps; 640 x 360, Max 30fps; 2CIF(704 x 288), Max 30fps; CIF (352 x 288), Max 30fps; Third Stream: D1 (720 x 576), Max 30fps; 640 x 360, Max 30fps; 2CIF (704 x 288), Max 30fps; CIF (352 x 288), Max 30fps;
Video Bit Rate	128 kbps - 16 mbps
U - Code	Support
OSD	Up to 8
Privacy Mask	Up to 4 Areas
ROI	Up to 8 Areas
Video Stream	Triple Stream

IMAGE	
White Balance	Auto / Outdoor / Fine Tune / Sodium Lamp / Locked / Auto 2
Smart IR	Support
Flip	Normal / Vertical / Horizontal / 180° / 90° Clockwise / 90° Anti-Clockwise
Dewarping	Support
HLC	Support
BLC	Support
Defog	Digital Defog

INTELLIGENCE	
Smart Intrusion Prevention	Support False Alarm Filtering, Cross Line Detection, Intrusion Detection, Enter Area Detection, Leave Area Detection
Statistical Analysis	People Counting, Support People Flow Counting and Crowd Density Monitoring

EVENTS	
Basic Detection	Motion Detection, Ultra Motion Detection, Tampering Alarm, Audio Detection
General Function	Watermark, IP Address Filtering, Tampering Alarm, Alarm Input, Alarm Output, Access Policy, ARP Protection, RTSP Authentication, User Authentication

AUDIO	
Audio Compression	G.711
Audio Bit Rate	64 kbps
Two-Way Talk	Support
Suppression	Support
Sampling Rate	8 KHZ

STORAGE	
Edge Storage	Optional Memory Card, Up to 256 GB
Network Storage	ANR, NAS (NFS)

NETWORK	
Protocols	IPv4, IPv6, IGMP, ICMP, ARP, TCP, UDP, DHCP, PPPoE, RTP, RTSP, RTCP, DNS, DDNS, NTP, FTP, UPnP, HTTP, HTTPS, SMTP, 802.1x, SNMP, QoS, RTMP, SSL / TLS, SSH
Interoperability	ONVIF (Profile S, Profile G, Profile T), API, SDK
User / Host	Up to 32 users; 2 User Levels: Administrator and Common User
Security	Password Protection, Strong Password, HTTPS Encryption, Export Operation Logs, Basic and Digest Authentication for RTSP, Digest Authentication for HTTP, TLS 1.2, WSSE and Digest Authentication for ONVIF
Client	VMSN, VMSN Mobile
Browser	Plug-In Required Live View: IE 10 and Above, Chrome 45 and above, Firefox 52 and Above, Edge 79 and Above

INTERFACE	
Audio In / Out	Input: Impedance 35k Ω; Amplitude 2V [p - p] Output: Impedance 600 Ω; Amplitude 2V [p - p]
Alarm In / Out	1 / 1
RS485	N / A
Built-In Mic	N / A
Built-In Speaker	N / A
Wifi	N / A
Network	1 - RJ45 10M / 100M Base-TX Ethernet
Video Output	N / A

IP8MIBC-212-NCV

8MP 4K Varifocal IP Bullet Camera with Analytics



PRODUCT SPECIFICATIONS CONT.

CERTIFICATIONS	
EMC	CE-EMC (EN 55032: 2015 + A1: 2020, EN 61000-3-3: 2013 + A1: 2019, EN IEC 61000-3-2: 2019 + A1: 2021, EN 55035: 2017 + A1: 2020) FCC (FCC CFR 47 part 15 B, ANSI C63.4-2014)
Safety	CE LVD (EN 62368-1: 2014 + A1: 2017) CB (IEC 62368-1: 2014) UL (UL 62368-1, 2nd Ed., Issue Date: 2014-12-01)
Environment	CE-RoHS (2011 / 65 / EU; (EU) 2015 / 863); WEEE (2012 / 19 EU); Reach (Regulation (EC) no 1907 / 2006)
Protection	IP67 (IEC 60529: 1989 + AMD2: 2013) IK10 (IEC 62262: 2002)

GENERAL	
Power	DC 12V ±25%, PoE (IEEE 802.3af) Power Consumption: Max 10.5W
Power Interface	Ø 5.5mm coaxial power plug
Dimensions	9.6" (L) x 3.4" (W) 2.8" (H)
Weight	2.03 lbs
Material	Metal
Operating Environment	-22°F ~ 140°F, Humidity: ≤95% RH (non-condensing)
Storage Environment	-22°F ~ 140°F, Humidity: ≤95% RH (non-condensing)
Surge Protection	6KV
Reset Button	N / A

ADDITIONAL PRODUCTS



OPTIVIEW'S VIDEO MONITORING SOFTWARE
Remote Monitoring



NVR64-8-NCV
64 Channel NDA
Compliant RAID NVR



IP160P-NCV
4MP Wide Angle Fixed
Bullet Night Color Camera



IP4MIAB-28-AD-NCV
4MP Armor Ball Camera
with Active Deterrence



IP2MPTZ33-NCV
2MP 33X Starlight PTZ
Camera

COMPATIBLE BRACKETS



BKT-07
Junction Box for
PTZ & VF Cameras

DIMENSIONS

