



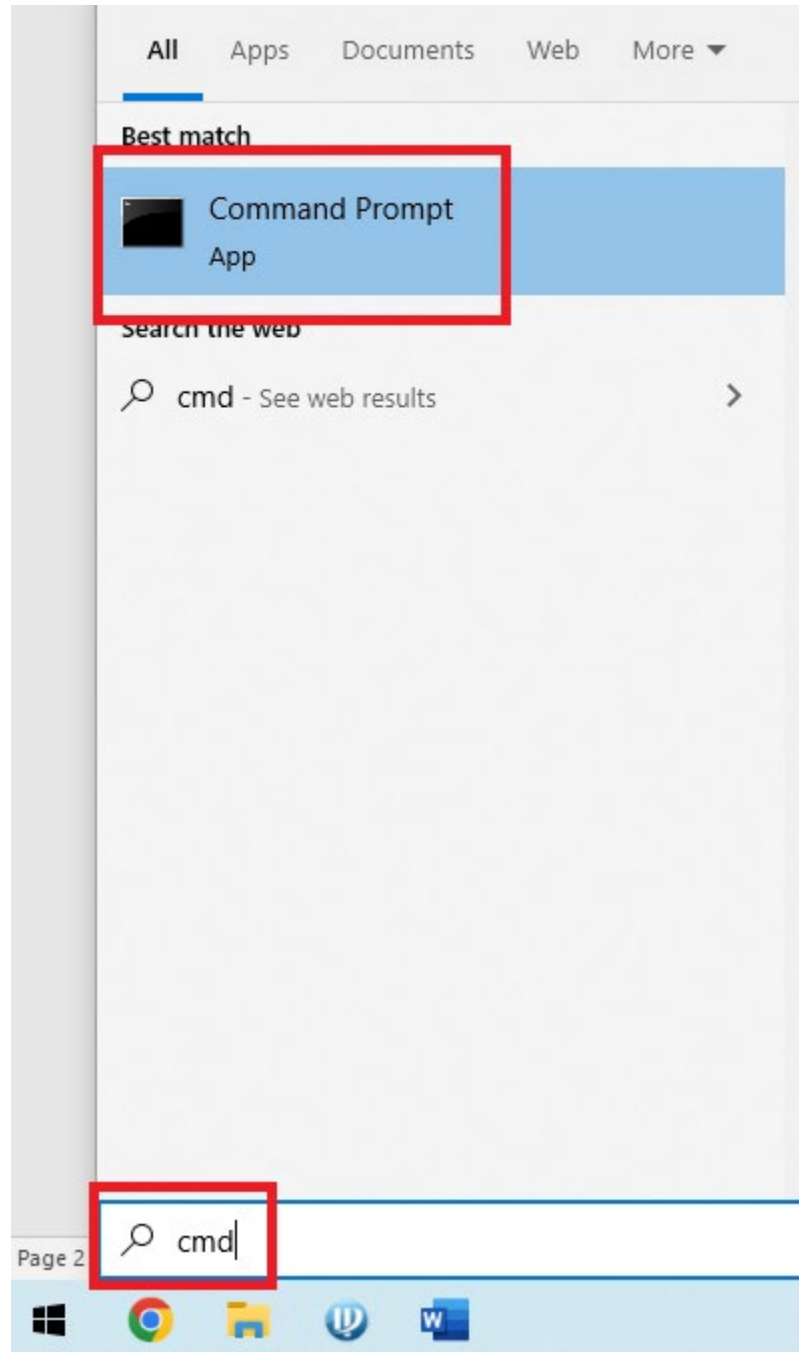
SET UP GUIDE:

IP2MPTZ33-NCV





1. Open your Command Prompt by opening up the “**Start**” menu and type “**cmd**” and select “**Command Prompt**”:






2. Type in the command `ipconfig` like this:

```
CA: Command Prompt
Microsoft Windows [Version 10.0.19042.1706]
(c) Microsoft Corporation. All rights reserved.

C:\Users\danie>ipconfig
```



3. Your IP Address will be displayed under "IPv4 Address":

```
CA: Command Prompt
Microsoft Windows [Version 10.0.19042.1706]
(c) Microsoft Corporation. All rights reserved.

C:\Users\danie>ipconfig

Windows IP Configuration

Ethernet adapter Ethernet:

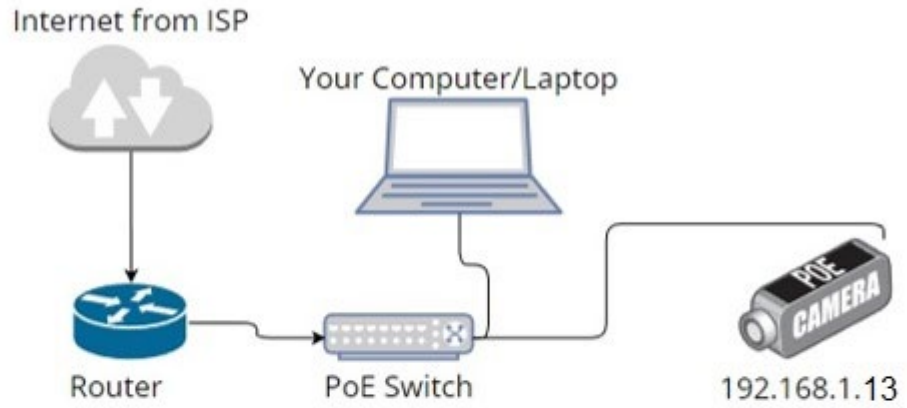
    Connection-specific DNS Suffix  . :
    Link-local IPv6 Address . . . . . : fe80::5d0:2a6a:72f2:8a24%10
    IPv4 Address. . . . . : 192.168.1.231
    Subnet Mask . . . . . : 255.255.255.0
    Default Gateway . . . . . : 192.168.1.1

C:\Users\danie>
```

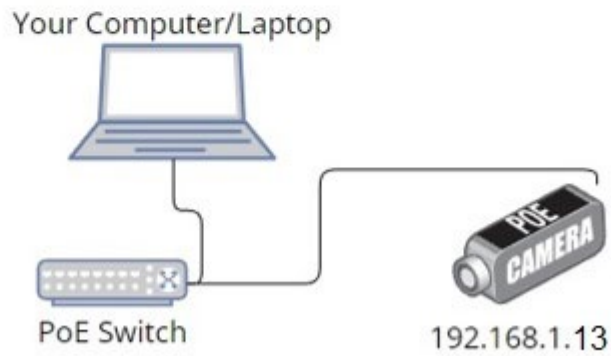
4. If your IP Address is between **192.168.1.2 – 192.168.1.254** you will use **Example 1** in the guide below. If your address is not within the **192.168.1.2 – 192.168.1.254** subnet, or your IP address is currently **192.168.1.13** you will need to use **Example 2** in the guide below before moving on with the setup process.



EXAMPLE 1: NORMAL SET UP

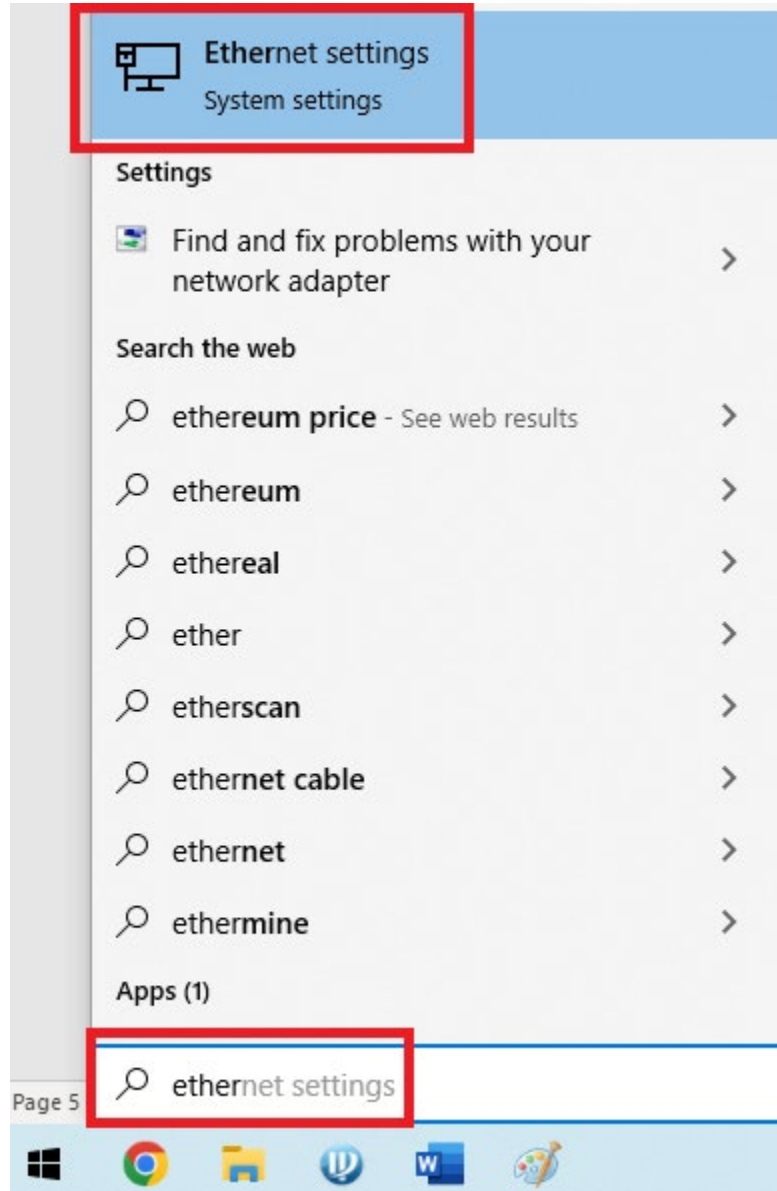


EXAMPLE 2: OUT OF SUBNET SET UP



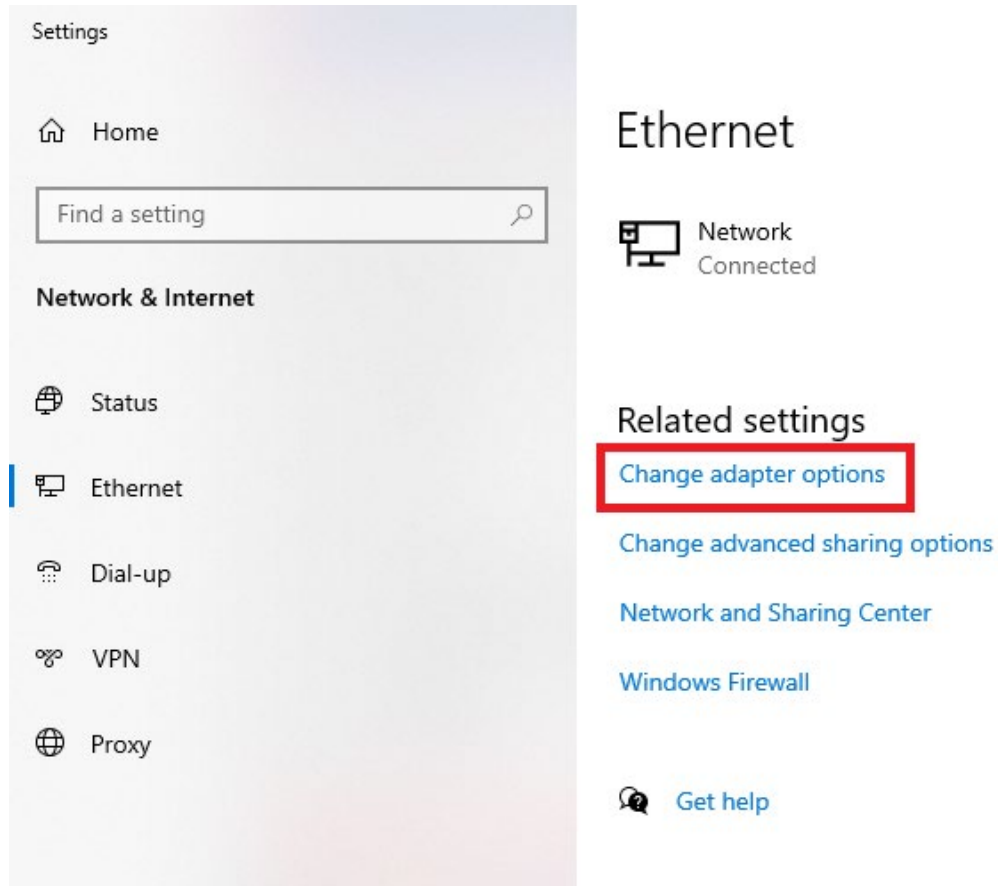


5. If your IP Address is between **192.168.1.2 – 192.168.1.254**, and not **192.168.1.13**, move on the **Step 13**. If not, move to **Step 6**.
6. Once you have configured your devices as shown in Example 2, click the “Start” menu and type “Ethernet” and click “Ethernet Settings”:

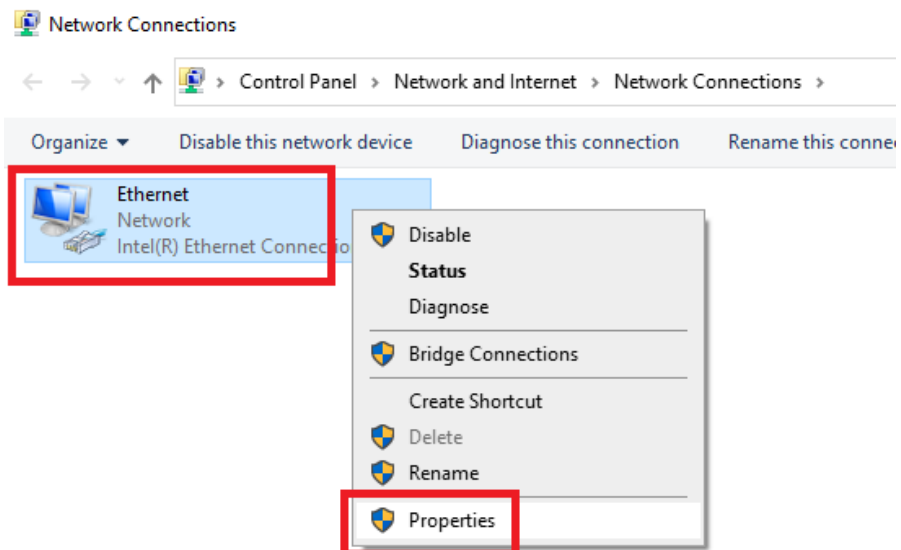




7. Click “Change Adapter Options”:

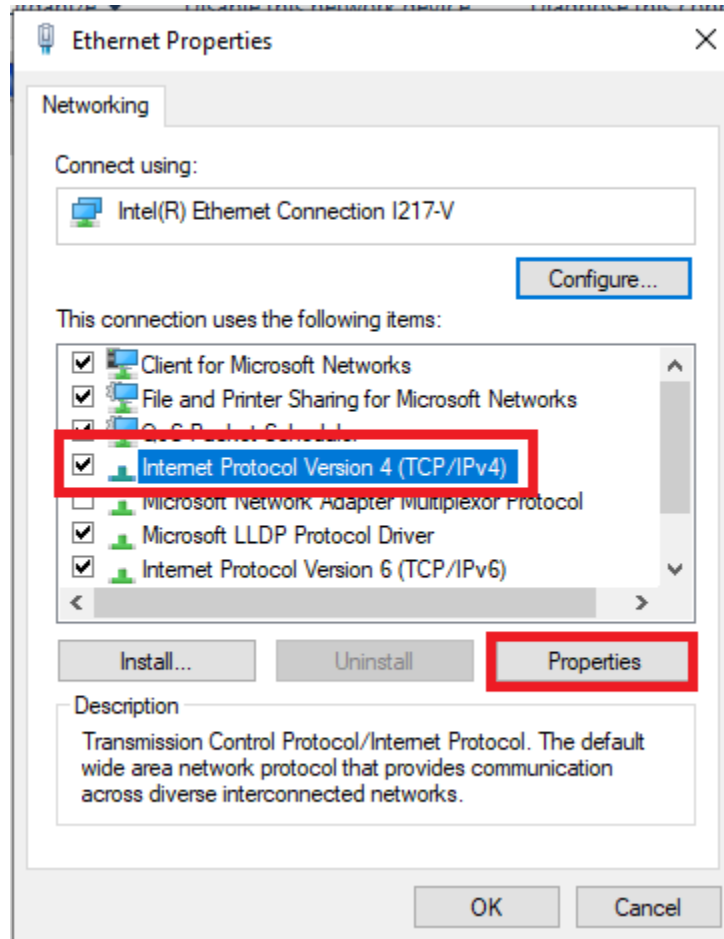


8. Right-click on your ethernet adapter and click “Properties”





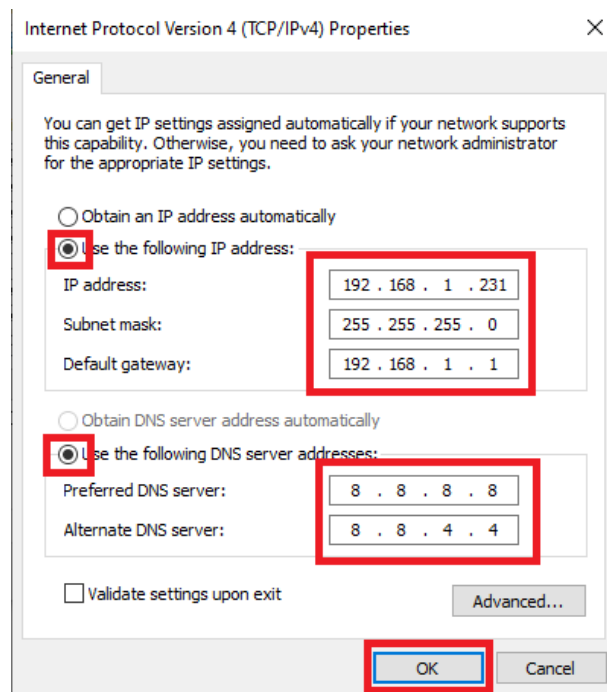
9. Select Internet Protocol Version 4 (TCP/IPv4) and click “Properties”:





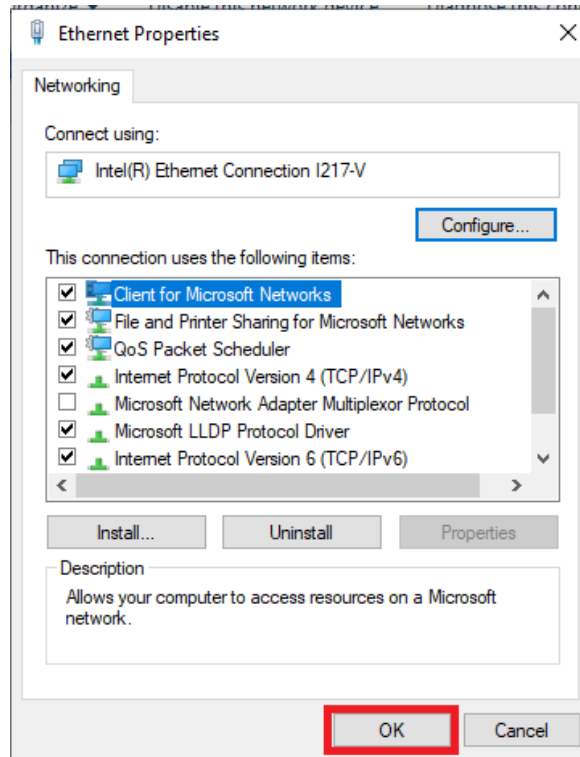
10. Change your IP Address to something within the range of **192.168.1.2 – 192.168.1.254** and set your default gateway as **192.168.1.1**. You can also set your Primary and Alternate DNS settings to 8.8.8.8 for Primary and 8.8.4.4 for Alternate as seen in the screenshot below. Once you are done, click “OK”:

IMPORTANT: Do NOT set your IP address to **192.168.1.13** because that is the default IP address as the camera. We need a different IP address than the camera to connect to it:





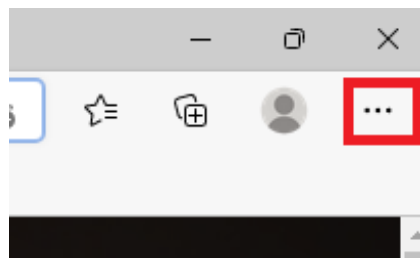
11. Click “OK” at the next screen as well:



12. Your new IP Address is now set and you are now on the same subnet as the IP2MPTZ33-NCV.

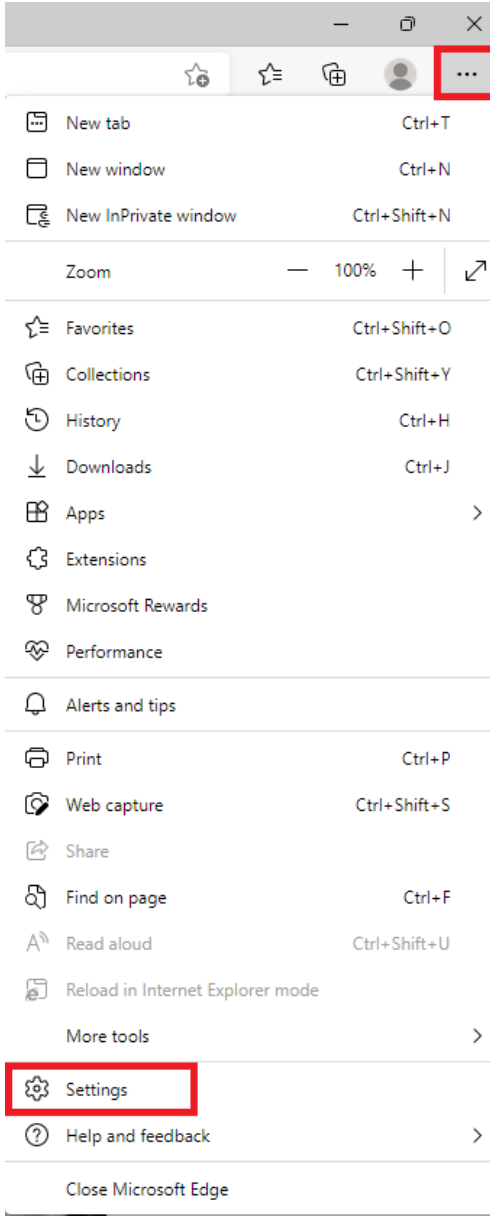
13. Currently, the best browser for viewing any IP cameras is **Microsoft Edge** using the Internet Explorer emulation which you will now quickly set up with the next few steps.

Open Microsoft Edge click the 3 dots for the settings menu in the top right corner below the “X”:



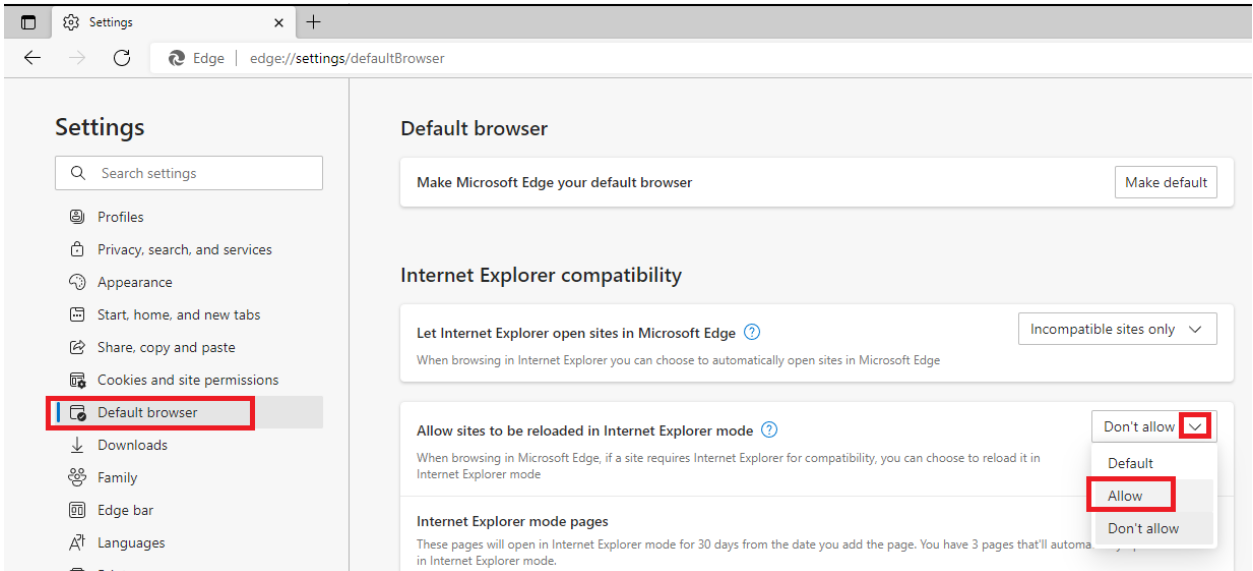


14. Click “Settings”:

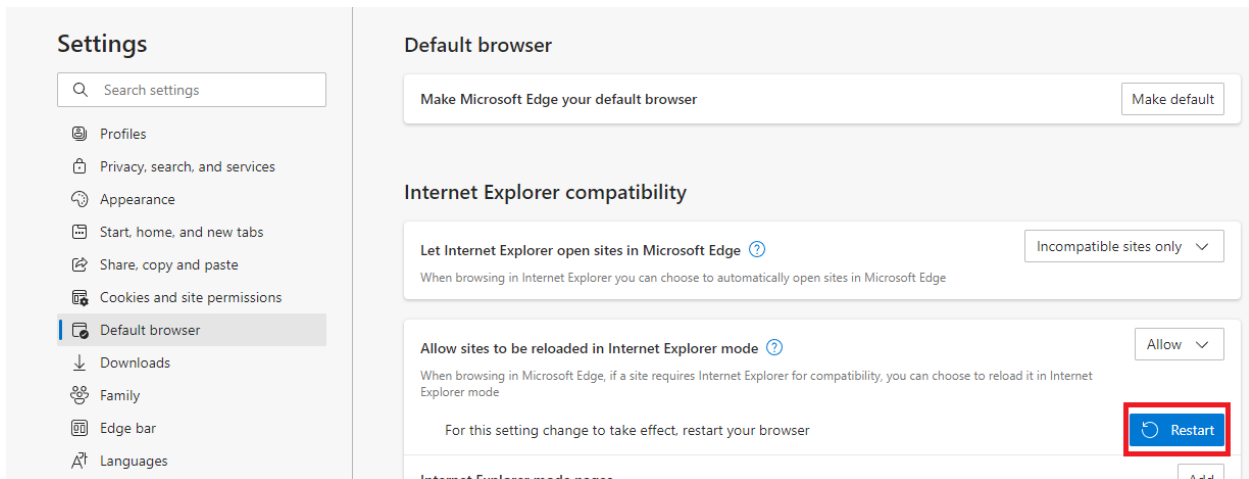




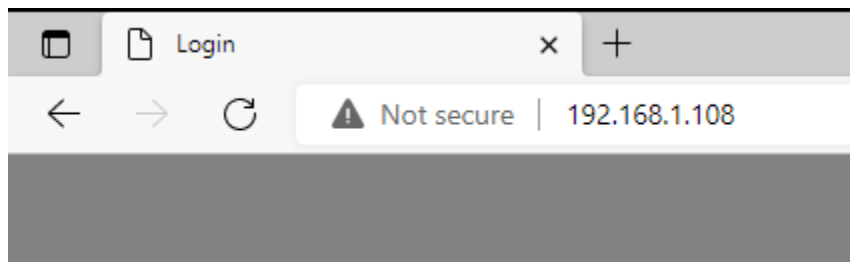
15. Select “Default Browser” on the left and click the dropdown menu for “Allow sites to be reloaded in Internet Explorer mode”:



16. Click “Restart”:

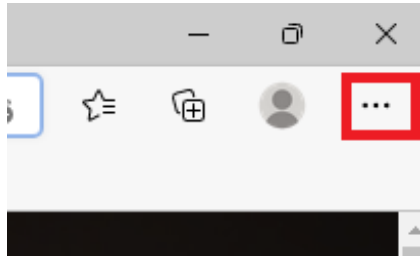


17. Type **192.168.1.13** into the **Microsoft Edge** browser window as this is the default IP address for the IP2MPTZ33-NCV camera:

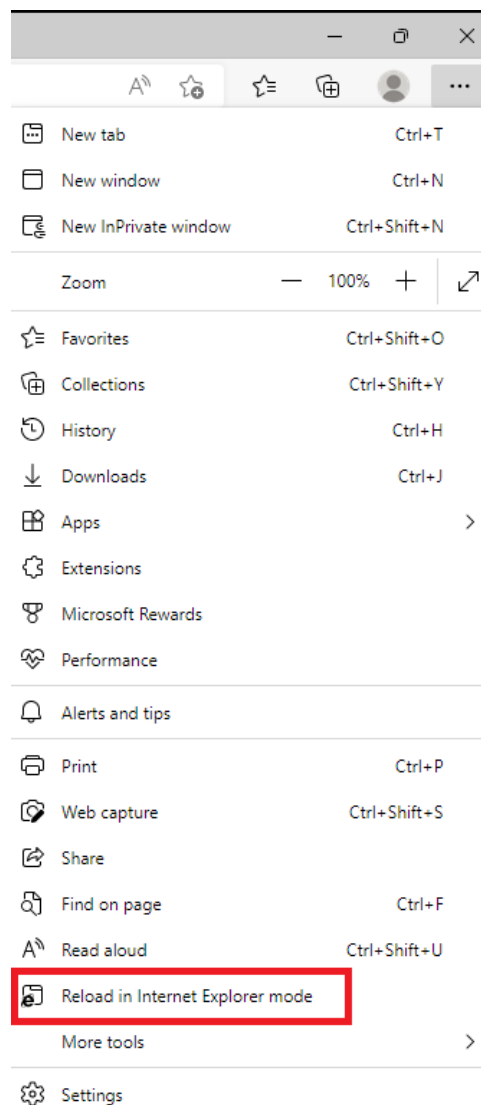




18. Before setting up the camera, click the 3 dots in the top right corner of the **Edge** browser that you clicked in **Step 14**:

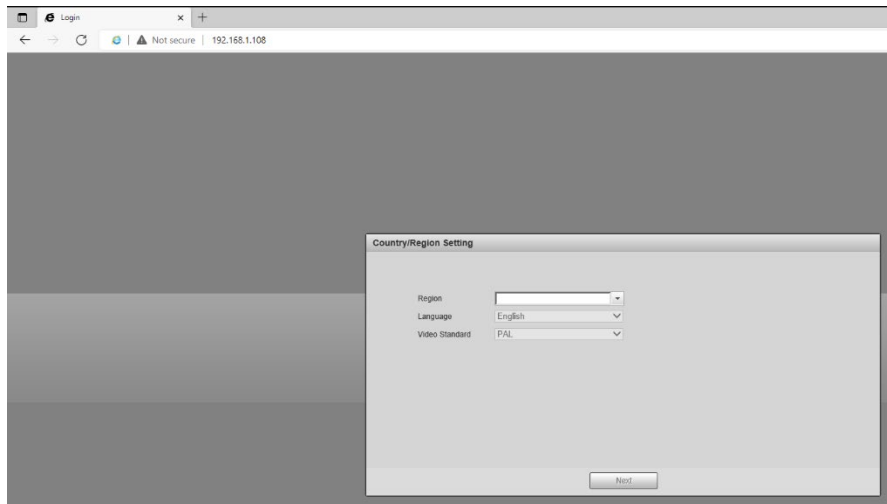


19. This time, select “Reload in Internet Explorer Mode”:





20. You can now start setting up the camera which will include basic region, date/time and password settings:



21. Once you are done you will be brought to the login screen for the camera and need to type in the password you just set. Your username will be **admin**





22. Congrats! Your IP2MPTZ33-NCV camera is now set up and ready for use:

