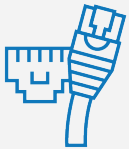




Optiview

IP5MPTZ-4XAD-NCV

5MP Network PTZ with IR and Active Deterrence



5MP IP

Capture HD video footage with 5MP IP 2.8~12mm Automatic focus and motorized zoom lens



164FT IR

High powered night vision with a minimum illumination of 0.003 LUX and IR.



22~121° View

Capture even more with an ultra-wide 22~121° view with no distortion.



Smart Intrusion Prevention

Accurately reduce false alarms with custom zones with human and vehicle detection.



Active Deterrence

Built-In Mic & Speakers with blue/red alarm light provides active deterrence where you need it the most

UP TO 164FT IR DISTANCE

The IP5MPTZ-4XAD-NCV is capable of producing a stunningly clear, colorful video with low illuminance enhancement for darker environments. In the darkest environments, on board IR illumination kicks in. The IP5MPTZ-4XAD-NCV provides clear video capture in both day and night with high definition video output.

ACTIVE DETERRENCE

With built-in mic and speaker along with blue/red alarm light the IP5MPTZ-4XAD-NCV paired with advanced intelligent perimeter protection provides active deterrence for unwated intruders where you need it the most.

SMART INTRUSION PREVENTION

Utilizing machine learning and data intelligence, Smart Intrusion Prevention or SIP helps reduce false-alarm rates by allowing you to set up Cross Line Detection, Intrusion Detection, as well as Enter / Leave Area, all which can do any combination of human/vehicle/ non-motor vehicle recognition. Smart Intrusion Prevention's detection rate of >95% helps you improve your perimeter protection, reduce false alarms while keeping you informed about the events that matter the most to you.

WIDE DYNAMIC RANGE

The camera achieves vivid images, even in the most intense contrast lighting conditions, using industry-leading wide dynamic range (WDR) technology. For applications with both bright and low lighting conditions that change quickly, True WDR (120 dB) optimizes both the bright and dark areas of a scene at the same time to provide usable video.

IP5MPTZ-4XAD-NCV

5MP Network PTZ with IR and Active Deterrence



ULTRA MOTION DETECTION

Utilizing machine learning and data intelligence, Ultra Motion Detection or UMD helps you filter out object based on motion detection, detecting motion of specified object types in the image, and trigger an alarm when such motion is detected. UMD supports two different object types: Person and Vehicle. UMD provides a detection rate of >90% up to 49ft and is more efficient than traditional motion detection, further reducing false-alarms. Ultra Motion Detection can be configured to your full screen or area detection.

ULTRA 265 COMPRESSION

Utilizing H.265 advanced video encoding, provides high-quality video while reducing the storage space needed to retain your video events. Users can add their own memory card to take advantage of its edge recording capabilities.

ANR TECHNOLOGY

The IP5MPTZ-4XAD-NCV when connected to an ANR compatible Network Video Recorder will automatically store video data on the internal memory card when the network is disconnected. After recovery to the network, the NVR automatically retrieves the video data stored on the camera.

COMMERCIAL GRADE EQUIPMENT

Built for endurance, this all metal housing is rated IP66, which means it is protected from water and dust. Mount this camera anywhere with it's 3-axis cable management bracket. Additional junction boxes and brackets are available for additional installation options, and help further protect your cables and connections.

NDAA COMPLIANCE

The John S. McCain National Defense Authorization Act (NDAA) is a United States federal law which specifies the budget, expenditures and policies of the U.S. Department of Defense. For Fiscal Year 2019, the NDAA Section 889, prohibits the U.S. government from procuring video and telecommunication equipment from certain Chinese companies and their subsidiaries. Some non government projects may require NDAA compliance if federal funding is being used.

EDGE RECORDING

Optional edge recording with an optional memory slot expandable up to 256GB.

PRODUCT SPECIFICATIONS

CAMERA					
Sensor		1/2.7" progressive scan, 5.0 megapixel, CMOS			
Lens		2.8~12mm AF automatic focusing and motorized zoom lens			
DORI Distance	Lens	Detect	Observe	Recognize	Identify
	2.7mm	206.69ft	82.68ft	41.34ft	20.67ft
	13.5mm	885.83ft	354.33ft	177.17ft	88.58ft
Angle of view (H)		20.5° ~ 112.9°			
Angle of View (V)		16.8° ~ 59.1°			
Angle of View (O)		21.8° ~ 121.2°			
Shutter		Auto/Manual, shutter time: 1 s ~ 1/1000000s			
Minimum Illumination		Color: 0.003 LUX (F1.6,AGC ON) 0 lux with IR			
Day/Night		IR-cut filter with auto switch (ICR)			

CAMERA CONT.	
Digital Noise Reduction	2D / 3D DNR
S/N	>52 dB
IR Range	Up to 164ft IR range
Wavelength	850nm
IR On/Off Control	Auto / Manual
Warm Light Range	Up to 33ft
WDR	120dB

VIDEO	
Video Compression	Ultra 265,H.265, H.264, MJPEG
H.264 code profile	Baseline profile, Main Profile
Video Bit Rate	128 Kbps~16 Mbps
OSD	Up to 8 OSDs

IP5MPTZ-4XAD-NCV

5MP Network PTZ with IR and Active Deterrence



PRODUCT SPECIFICATIONS CONT.

VIDEO CONT.	
Privacy Mask	Up to 8 areas
ROI	Up to 8 areas
Motion Detection	Up to 4 areas
Frame Rate	<p>Main Stream: 5MP (2880 * 1620), Max 25fps; 4MP (2560 * 1440), Max 25fps; 3MP (2304 * 1296), Max 25fps; 2MP (1920 * 1080), Max 30fps;</p> <p>Sub Stream: 720P (1280 * 720), Max 30fps; D1 (720 * 576), Max 30fps; 640 * 360, Max 30fps; 2CIF (704 * 288), Max 30fps; CIF (352 * 288), Max 30fps;</p> <p>Third Stream: D1 (720 * 576), Max 30fps; 640 * 360, Max 30fps; 2CIF (704 * 288), Max 30fps; CIF (352 * 288), Max 30fps;</p>

INTERFACE	
Network	1 RJ45 10M/100M Base-TX Ethernet
Built-in Mic	Supported
Built-in Speaker	Supported
Alarm Light	Supported

INTELLIGENT	
Smart intrusion Prevention	Cross Line, Intrusion, Enter Area, Leave Area detection; Motion detection;

IMAGE	
White Balance	Auto / Outdoor / Fine Tune / Sodium Lamp / Locked / Auto2
Digital Noise Reduction	2D / 3D DNR
Smart IR	Support
Flip	Normal / Vertical / Horizontal / 180°
Dewarping	N/A
HLC	Supported
BLC	Supported

NETWORK	
Protocols	IPv4, IGMP, ICMP, ARP, TCP, UDP, DHCP, PPPoE, RTP, RTSP, RTCP, DNS, DDNS, NTP, FTP, UPnP, HTTP, HTTPS, SMTP, 802.1x, SNMP, SSL
Compatible Integration	ONVIF(Profile S, Profile G, Profile T), API
Client	Optiview vmsn

NETWORK CONT.	
Web Browser	Plug-in required live view: IE9+, Chrome 41 and below, Firefox 52 and below
	Plug-in free live view: Chrome 57.0+, Firefox 58.0+, Edge 16+, Safari 11+

AUDIO	
Audio Compression	G.711U, G.711A
Two-way Audio	Supported
Suppression	Supported
Sampling Rate	8 KHZ

STORAGE	
Edge Storage	Memory Card Slot, up to 256 GB
Network Storage	ANR, NAS(NFS)

EVENTS	
Basic Detection	Motion detection, Tampering alarm, Audio Detection
General Function	Watermark, IP Address Filtering, Tampering Alarm, Access Policy, ARP Protection, RTSP Authentication, User Authentication

PAN & TILT	
Pan Range	345°
Pan Speed	0.1°/s ~ 50°/s, Preset speed: 50°/s
Tilt Range	-10~110°
Tilt Speed	0.1° ~ 40°/s, Preset speed: 40°/s
Number of Presets	256
Patrol	Preset patrol, Route patrol

GENERAL	
Power	DC 12V±25%, PoE (IEEE802.3 at)
Power Consumption	Max 18 W
Dimensions (Ø x H)	Φ5.2"x 10.6"
Net Weight	1.92lb
Gross Weight	2.49lb
Material	Metal + Plastic
Working / Storage Environment	-4°F to 140°F, Humidity:≤95% RH(non-condensing)
Surge Protection	4KV
Ingress Protection	IP66

IP5MPTZ-4XAD-NCV

5MP Network IR Mini PTZ Camera with Built-In Audio



ADDITIONAL PRODUCTS



OPTIVIEW VMX
Remote Monitoring



NVR16P164K-2-NCV
16 Channel 16 PoE 4K
NDA Compliant NVR



IP4MIAD-212-Z-NCV
4MP Motorized Zoom
Armor Dome IP Camera



IP5MIBC-28-SD-NCV
5MP Fixed IP Bullet
Camera w/ Built-in Mic



GMC-256GB
256GB Memory Card

DIMENSIONS

