

HDCD-1080-312 / HDCB-1080-312

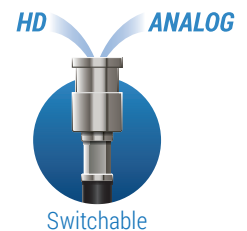
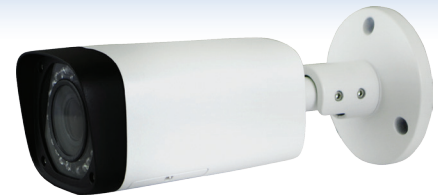
2.4 Megapixel 1080P Varifocal HD-over-Coax Armor Dome Camera



Features

- 1/2.8" 2.4 Megapixel CMOS
- 25/30 @ 1080P, 25/30/50/60fps @ 720P
- High speed, long distance real-time transmission
- HD and Standard definition switchable
- OSD Menu, control over coaxial cable
- Day/Night (ICR), AWB, AGC, BLC, 3D-DNR
- 2.7~12mm Varifocal Lens
- Max IR LEDs length 98ft (30m), Smart IR
- IP66, DC12V

HDCD-1080-312

HDCB-1080-312


Specifications

		HDCD-1080-312	HDCB-1080-312
Image Sensor		1/2.8" 2.4 Megapixel CMOS	
Resolution	HD-over-Coax	1984 x 1225	
	Analog	700 TVL	
Frame Rate		25/30/50/60fps @ 720P; 25/30fps @ 1080P	
Electronic Shutter		1/3s ~ 1/100,000s	
Effective Picture (H x V)		1984 x 1225	
Video Output		1 x BNC - Analog / HD Switchable	
Focal Length		2.7 ~ 12mm	
Lens Type		Varifocal	
Min. Illumination Color / B&W		0.05 Lux @ F1.2 (AGC On), 0 Lux (IR On)	
Infrared Range		98ft. (Max.)	
Day / Night		Auto (ICR) / B&W / Color	
Noise Reduction		3D / 2D	
Weatherproof Rating		IP66	
Transmission Distance		Over 1,640ft (500m) via 75-3 coaxial cable	
Bracket Included		No	
Power Supply		12V±10% DC	
Working Environment		22°F ~ 140°F (-30°C ~ 60°C), less than 80% RH (no condensation)	
Dimensions / Weight		4.7" x 3.9" / Approx. 1.2 lbs	8.4" x 3.2" x 2.83" / Approx. 1.2 lbs